



Siegburg (D), Center  
Boulevard Antifracite basalt.



Cologne (D), Hohe Straße  
Beipasso Grassano.

**METTEN**  
stein+design®

Hammermühle · 51491 Overath · GERMANY  
Tel. +49 22 06 / 603 - 0 · Fax +49 22 06 / 603 - 80 · [www.metten.de](http://www.metten.de)

© METTEN Stein+Design 2013. Technical changes as well as deviation in colour are reserved.



# BOULEVARD

**METTEN**  
stein+design®



Schwalmstadt (D), HBM  
Boulevard Lombardo.

## BOULEVARD

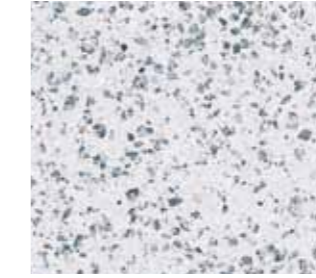
Boulevard is a ground concrete stone, the surface of which is very similar to ground natural stone. Concrete is a fascinating design element. It enables us to combine natural stone aggregate in order to create specific surfaces. This natural stone aggregate is bound with the natural binder cement. After setting, the natural stone aggregate is exposed in the same way as ground natural stone on special grinding lines. Obtained is a highly durable and resistant paver. Boulevard complies with strict Austrian

standards for frost/de-icing salt. The precise grind gives this paver an elegant lustre also when dry. The appearance of a sawn natural stone is achieved by fibreless manufacture. Spacers along the edges of the paver protect the edges and facilitate laying. The elegant appearance of Boulevard adds to enhance and accentuate the architectural style of any building and has been used as a design element in numerous well-known architectonic projects.



Herne (D), Willi-Pohlmann-Platz  
Boulevard Grassano and Nardo.

## BOULEVARD



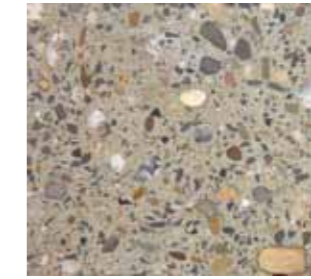
Granite white



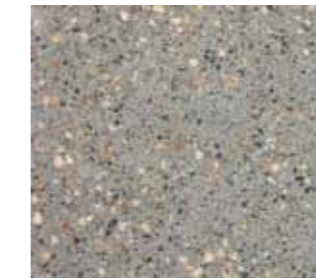
Diamond grey



Grassano



Rheinsandbeige



Marinello



Lombardo



Ferrano



Anthracite basalt



Nardo



Havanna brown

### PROPERTIES

- Very dense, high-quality surface produced in elaborate grinding process.
- High colour fastness due to the use of selected, colour co-ordinated natural stone chippings.
- Resistant to frost and de-icing salt.
- Non-slip: SRT tested. Minimum 55 SRT (22% above EURO STANDARD), test certificate is available on request.
- Complies with stringent Austrian standards for resistance to frost/de-icing salt.

– Also optionally available:

**CleanTop®** surface with Clean Factor CF90:

- Dirt repellent.
- Natural appearance in combination with surface protection.
- Easy to clean compared to paving systems without CleanTop®.
- Algae and moss inhibiting.
- No subsequent impregnation necessary.

**BlueAir®** technology:

- Photocatalytic process corresponding to the ideal of nature.
- Conversion of nitrogen oxides into nitrates under effect by sunlight.
- The effectivity of photocatalysis has been tested by renowned research institutes.

### SIZES

You will find a current listing of sizes at [www.metten.com/boulevard](http://www.metten.com/boulevard)

